



GERRIC STUDENT PROGRAMS

JANUARY 2021
PARENT/CARER HANDBOOK



CONTENTS

INTRODUCTION	2
Our presenters	3-4
WHEN AND WHERE	5
Workshop locations and timing	5
Maps	6-7
What to bring	8
Workshop preparation	8
WELLBEING AND SAFETY	9-10
Covid-19 safety	11
Code of conduct	12
GETTING TO THE UNIVERSITY	13
Public transport options	13
Street parking	13
Campus parking	14

INTRODUCTION

GERRIC in the School of Education, Faculty of Arts and Social Sciences was founded by Miraca Gross in 1991. GERRIC has led the way, on a national level, providing gifted children with access to intellectually stimulating and challenging enrichment programs run by veteran teachers and university academics. GERRIC also seeks to support the families of gifted students by offering information about assessment, access to parent courses, public lectures, and master classes by experts in the field of gifted education. Combined with this strong research foundation, in the last five years, the School of Education has continued to focus on the provision of the highly popular GERRIC Student Programs, which still take place bi-annually, during the January and July school holidays. The programs attract gifted children from around Australia, with growing interest from parents of gifted children internationally, including New Zealand, the US, Asia and as far afield as the Ukraine, which indicates the scope and reach of the programs' reputation. Approximately 400 students have attended each student program run since 2011.



The School works with high-calibre presenters for its workshops, including experienced primary and high school teachers, and university academics, who have years of experience teaching and a high-level of knowledge in giftedness, to create workshops that are intellectually stimulating, thought-provoking, and challenging for gifted students who are seeking rigorous enrichment in subject areas of interest.

We recognise the benefit that the practical experience and exposure to the classroom can have for our teacher education students. Consequently, students studying an Education degree at UNSW who are interested in developing their teaching skills can volunteer over the course of the GERRIC student programs, assisting and working closely with the presenters in the classroom and getting first-hand experience with gifted students. Over the years, hundreds of student assistants have contributed their skills and knowledge of pedagogy, learnt through their education degree, to the GERRIC Student Programs.



Our goal is to provide an engaging and enriching experience for your child in a safe environment.

We look forward to seeing you soon.

OUR PRESENTERS

<p>Tim Huang Years 3-4: <i>The Games People Play</i></p>	<p>Tim has 20 years' teaching experience in Special and Gifted Education, 1991-2010, and has been working with GERRIC since 2003.</p>
<p>Courtley Mancell Years 3-4: <i>NASA Spacecraft Engineering Challenge</i></p>	
<p>Laurie Strommer Years 3-4: <i>Ecowarriors: Exploration in Ecology and Conservation</i></p>	<p>Laurie always wanted to save the whales when she grew up. That dream evolved into a series of jobs in conservation and education. She protected wild things and places as a Park Ranger in the USA. She was a birding guide and a skiing natural history interpreter. Then she fell in love with Hawaii, where her PhD research was about conservation of threatened and endangered Hawaiian forest birds. She is passionate about Conservation Biology, and excited to lead students towards understanding some of the tools and conundrums of the subject.</p>
<p>Nathalia Velez Years 3-4: <i>Magical Muggle Studies</i></p>	<p>Nathalia completed a Bachelor of Advanced Science (Zoology) before pursuing graduate studies in Ecology. For the past six years she has pursued her passion for helping children explore the quirky and creative side of science in an entrepreneurial venture that has seen her recognised by Randwick City for Business Excellence. Nathalia's work as a science communicator has taken her around Australia where she works with amazing young people who want to use science to empower their contributions to the world.</p>
<p>Patrick Fisher Years 5-6: <i>Public Speaking and Debating Skills</i></p>	<p>Patrick is an experienced English teacher at Georges River College. In particular, he has an interest in the varied ways extracurricular activities shape the educational outcomes of High Potential and Gifted Students. Patrick is Georges River College's Gifted and Talented Education and Debating Coordinator, where he coached teams and individuals to state representation.</p>
<p>Daniel Judd Years 5-6: <i>Odd Maths</i></p>	<p>Daniel's education background includes a BA in Education and Linguistics (with G&T units), BTeach, COGE (Certificate of Gifted Education). He has more than a decade's experience in gifted education consultancy for various primary and secondary schools, including (a) professional development of staff; (b) evaluation of existing programs and provisions for gifted students; (c) establishment of programs and provisions; and (d) intervention for gifted students with specific needs. Interests in respect to teaching and gifted education are: "Middle School", Primary-to-High School transition, Science Teaching, Mathematics Teaching, Computing, Social Media use by schools, staff and students and LBOTE/Gifted students, among others.</p>
<p>Aaron Macleod</p>	<p>Aaron works with Schools and Educational Systems to develop and implement engaging, real-world STEM learning experiences in the classroom. For the past 15 years Aaron has worked with</p>

<p><i>Years 5-6: The Science of Our Earth's Changing Climate</i></p>	<p>thousands of gifted & talented students and teachers both in Australia and around the world conducting practical hands-on learning workshops around student centred learning. Aaron coordinates the Australian region of JASON Learning, a not for profit, hands-on STEM curricula in partnership with National Geographic.</p>
<p>Ken Ashwell <i>Years 7-10: The Brain in Health and Disease</i></p>	<p>Ken is a professor in the School of Medical Sciences at UNSW and a researcher of Comparative and Evolutionary Neuroscience. He is an experienced GERRIC presenter and author of textbooks.</p>
<p>Vladimir Tosic <i>Years 7-10: Introduction to AI using Logic Programming</i></p>	<p>Vladimir is an ICT educator with diverse teaching experiences, both at universities (in Europe, Canada and Australia) and in NSW secondary schools. He is currently a Casual Academic at the UNSW School of Computer Science and Engineering where he has taught many gifted and talented Ph.D., Masters, and Honours university students. Vladimir has taught artificial intelligence and logic programming both in NSW secondary schools and within undergraduate/postgraduate subjects at two universities. He is looking forward to helping GERRIC students start to learn and love this exciting area of human creativity.</p>
<p>Michele Waterson <i>Years 7-10: Critical Thinking: Ethics, Philosophy and How to Debate an Issue Brilliantly</i></p>	<p>Michele teaches Senior English and Applied Philosophy at St Pius X College. In addition to marking HSC English exams, she convenes debating and public speaking, coaches/trains CSDA Debating adjudicators, and is Vice-President of the Gifted and Talented Secondary Teachers Association (GATSTA). Michele holds a Master of Gifted Education degree from UNSW.</p>



WHEN

START TIME	BREAKS	FINISH TIME
Registrations / daily drop-off: 8:45am Workshops: 9:00am	Years 3-6: Recess: 10:40-11:00, Lunch: 12:30-13:15 Years 7-10: Recess: 11:00-11:20, Lunch: 13:15-14:00	3:30pm

To minimise the congregation of students we have different break times for junior and senior students. This is part of our Covid-safety plan. Students cannot meet parents or siblings from other workshops during breaks.

WHERE

ESSENTIAL INFORMATION TO NOTE:

Drop-off:

- Students meet their presenter / student leaders to sign in each morning at the lawns.
- Please DO NOT go straight to the workshop location

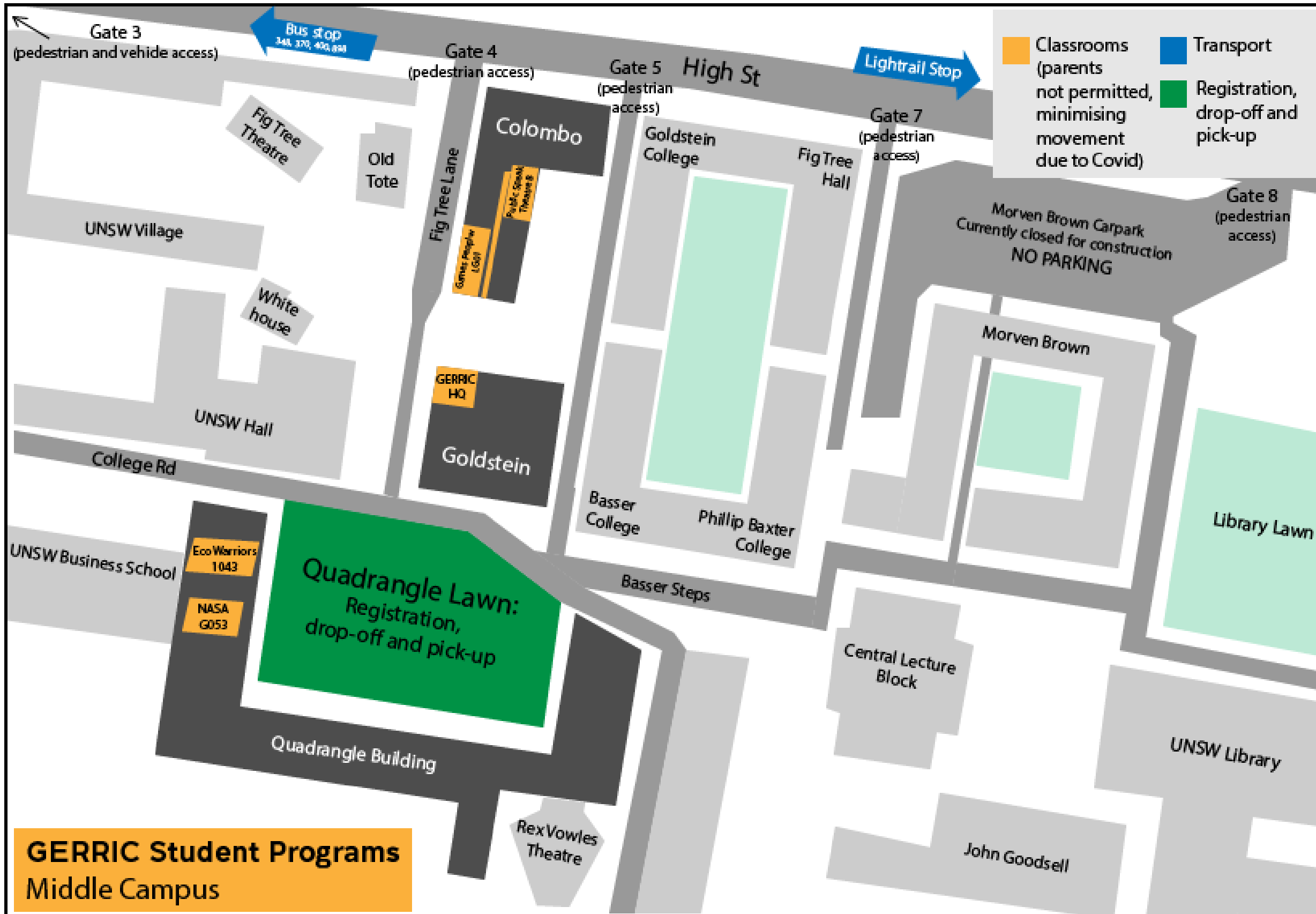
Pick-up:

- Make sure you are the authorised pick-up person
- Bring ID

Anyone picking up or dropping off students will need to use our Covid-safety check-in QR code.

- All students must be signed in and out by the authorised carers unless permission has been given via registration for children over 12 to leave alone.
- Please call the Program Hotline on **0497 965 622** if you need to come **early or late** to collect your child, and we will notify their presenter.
- Please email us to change the authorised pick-up person at gerric@unsw.edu.au

MICHAEL BIRT LAWN UPPER CAMPUS	QUADRANGLE LAWN MIDDLE CAMPUS
Years 3-4: Magical Muggle Studies Years 5-6: Odd Maths Years 5-6: The Science of Earth's Changing Climate All Years 7-10 workshops	Years 3-4: Eco Warriors: Exploration in Ecology and Conservation Years 3-4: The Games People Play Years 3-4: NASA's Spacecraft Engineering Challenge Years 5-6: Public Speaking and Debating

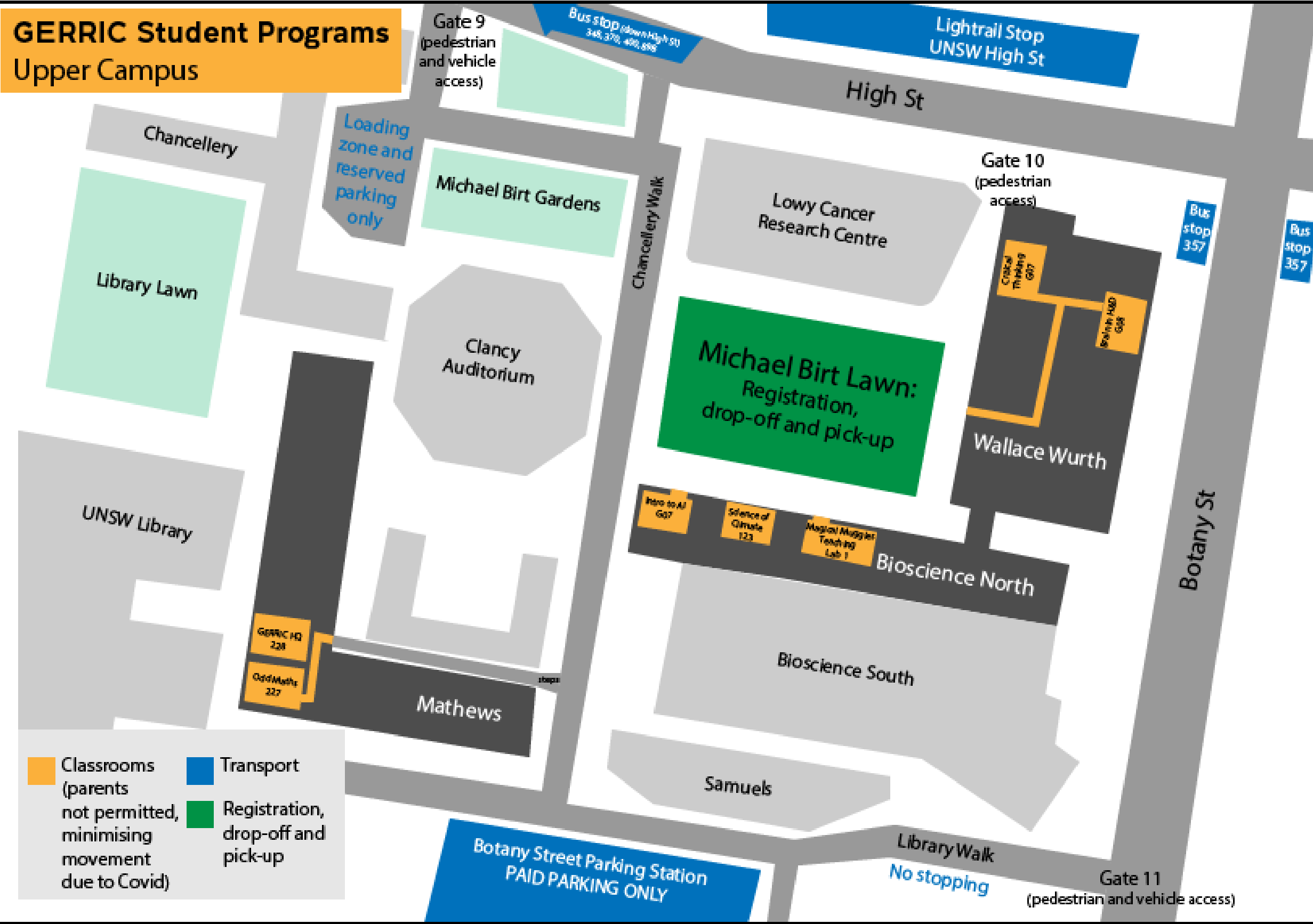


Years 3-4: The Games People Play
 Years 3-4: NASA's Spacecraft Engineering Challenge
 Years 3-4: Eco Warriors
 Years 5-6: Public Speaking and Debating Skills

Full transport and parking information on pages 13-14

GERRIC Student Programs Middle Campus

GERRIC Student Programs Upper Campus



Years 3-4: Magical Muggle Studies
 Years 5-6: Odd Maths
 Years 5-6: The Science of Earth's Changing Climate
 Years 7-10 all workshops

Full transport and parking information on pages 13-14

 Classrooms (parents not permitted, minimising movement due to Covid)	 Transport
 Registration, drop-off and pick-up	

WHAT TO BRING



- Water, morning tea, lunch and snacks
We will have fruit, muesli bars etc in the office for any hungry students, but we may not cater for all dietary requirements
- Hat
- Sunscreen
- Jacket/layers
In case of warm/cold weather – all the usual for unpredictable Sydney weather!
- Workshop requirements
Please see below regarding what to bring for your workshop

PLEASE DO NOT BRING



- Food items containing nuts
- Any unnecessary valuables
Such as iPads, phones or sports equipment IF THESE ARE NOT REQUIRED for your workshop

WORKSHOP PREPARATION

Please see the requirements for each workshop on the GERRIC Student Programs pages on the UNSW website:

[Years 7-10 Scientia Challenge](#)

[Years 3-6 Junior Scientia](#)

This includes what to bring, pre-reading and any other information you should know before the workshop.

The requirements have been specified by the presenter for your child to bring to their workshop. Some workshop requirements may be more specific than others. Please contact us if you are unable to bring any of the required items and we can assist where possible.

WELLBEING AND SAFETY

via Risk Assessment	Presenter & Assistant handbook	Code of conduct	Parent handbook	Staff training
<ul style="list-style-type: none">•Daily debrief with student assistants and presenters to offer opportunity to flag any welfare concerns. Concerns will be escalated to program coordinator and to parents if necessary.	<ul style="list-style-type: none">•Program aims, roles, and rules shared by staff working with students to promote clarity, communication, and confidence	<ul style="list-style-type: none">•Students and parents requested to sign 'code of conduct' which outlines our behaviour management strategy prior to arrival	<ul style="list-style-type: none">•Provide information to parents, invite collaboration and feedback for ongoing improvement	<ul style="list-style-type: none">•Student assistants, presenters, and UNSW staff briefed on identifying and responding to incidents of bullying as part of maintaining a child-safe workplace.

How will children be kept safe?

- All GERRIC staff and assistants must wear a GERRIC safety information card. A trained first aid member of staff will always be available, and two first aid kits will be kept in the GERRIC Program Office **Goldstein G01**.
- **All presenters and assistants must be anaphylaxis-response certified.**
- All children with medical history such as Asthma and Anaphylaxis must present a management plan (including photo of child) on applying for student programs. This plan will be provided to their individual workshop presenter before the start of the programs on the first morning. These students will have a blue dot on their nametag. Staff will ensure that EpiPen/inhalers are signed in at the start of each day and signed out at the end.
- **Staff will do a headcount of their group at the beginning and end of the day, and after breaks. If a student cannot be accounted for, we will contact parents and Campus Security.**
- Parents or caregivers must sign students IN and OUT each day. Our staff will sign students leaving with their parent or guardian and tick them off before they can leave.
- Students who wish to leave with another child or walk/take the bus home must have their parent confirm permission for this in writing on their application form or via email to GERRIC.
- **Running late or have something come up? At the end of the day, staff will take uncollected students to the Program Coordinator at GERRIC HQ, who will wait with them and contact parents.**

What if my child is hurt or ill?

- Presenters or assistants will remain with the student and call the Program Coordinator immediately. GERRIC staff will have further information on database and will contact parents. Medication will not be administered without parental permission.

Can students exchange names and addresses?

- We are frequently asked for lists of names and addresses by students, so they can keep in contact with each other. We allow students to do so personally, but we ourselves will not provide them without permission.
- Staff must not give out their personal contact details; all correspondence and communication must go via GERRIC. This includes social media accounts including Facebook, Twitter or Instagram.

What is the program's procedure for managing behaviour?

We know that usually, the students have chosen to attend the program and are motivated and well behaved. However, there can be all sorts of reasons for students to sometimes behave in ways that require us to respond. Our main goal is to ensure the safety of all our students: hence, any verbal and physical aggression will be addressed.

Students will be reminded of these few rules at their welcome assembly/the start of their workshop, and reminders will also be posted in classrooms for presenters to refer to if necessary.

COVID-19 SAFETY

The GERRIC Student Programs have been approved to run as an on-campus event by the Deputy Vice Chancellor's Safe Return committee, which includes senior staff from Risk Management, Estate Management, the Faculty of Arts, Design, and Architecture, and the Faculty of Medicine.

It is imperative that we all work together to ensure that we follow the practices outlined in the COVID Safety Plan.

You can read our full Covid-19 safety plan [here](#).

Key points:

A reminder that anyone who has tested positive for, been exposed to, shown symptoms of or is in isolation for Covid-19 must not attend the programs under any circumstances. Please notify us urgently if you are unable to attend for any reason.



- Physical distancing - 1.5m or the length of a shopping trolley
- Hand washing - if you can; sanitise hands if you can't.
- Do not share items - wear gloves, wash hands and sanitise items if sharing.
- Masks highly recommended* for students over the age of 12.

*Please note that students are not required to wear masks under the current restrictions, however, we highly recommend this for students over 12.

CODE OF CONDUCT

We appreciate you reading this with your child:

As a participant in the GERRIC Student Programs, I agree to:

1. Get people's permission before I take photos of them or post about them
2. Respect other people's privacy
3. Respect everyone's right to learn and have fun
4. Participate in the activities to the best of my ability
5. Be safe with property at UNSW
6. Listen to and follow the directions of the Student Program staff
7. Be respectful and courteous to everyone around me
8. Always wear my lanyard (***unless it is interfering with my focus in the classroom!*)

I understand that the following behaviour is not acceptable and will result in my being sent home from the GERRIC Student Program:

1. Physically harming another person
2. Verbally harassing another person to cause them embarrassment or ridicule
3. Leaving the boundaries of the program without permission
 - a. If a student leaves at the end of the day without signing out, we will contact parents/caregivers using the information provided. If no parent can be reached, we will notify police.
4. Sending inappropriate texts or photos

Participants who experience any bullying behaviour or who witness breaches of these rules can speak to Student Program staff, who will:

1. Address the behaviour with the student
2. Call the student's parents if required, and
3. Send the student home if required.

Process for addressing behaviour:

1. Remind student of the agreement to abide by the code of conduct.
2. Outline the behaviour observed/reported. Offer a dialogue with the student to hear their concerns.
3. Suggest outcome and seek to negotiate agreement.
4. Document using a Safety Form if required.

GETTING TO THE UNIVERSITY

Public transport

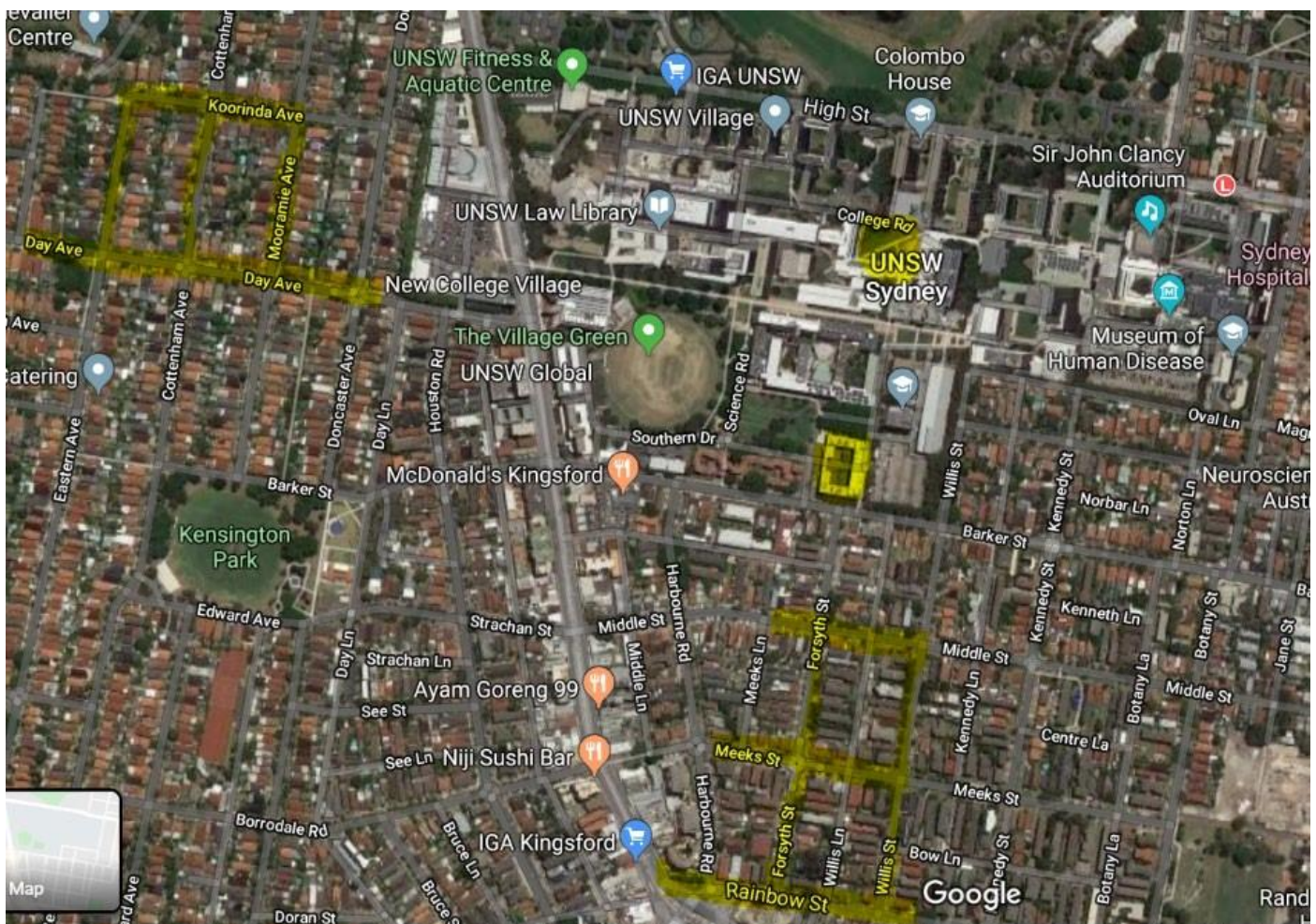
We recommend taking public transport when possible. Click [here](#) for public transport options.

The Light Rail L2 Randwick Line includes 14 stops between Circular Quay and Randwick, running through the CBD, Central, Surry Hills, Moore Park, UNSW and ending at the Randwick Hospital Campus on High Street, Randwick.

The UNSW High Street stop is at Gate 9, near the corner of High Street and Wansey Road (see campus map on p.7)

Street parking

The side streets surrounding Day Avenue (upper left below) and Rainbow Street (lower right below) are often used by students at UNSW during term time. Options vary between 1-hour, 2-hour, and unlimited, so please check signs around you very carefully.



Campus parking

Please note that if you choose to drive and park on campus, parking is expensive: it will cost you around \$50 per day. The minimum cost even if dropping off your child is \$7.50 each time if parking on Physics Road or \$15.00 each time if parking in Barker or Botany St Car Parks. Barker St parking stations is highlighted in yellow above.

PLEASE NOTE:

UNSW no longer has pay stations for casual parking. All visitors must use CellOPark.

There are three ways to register for CellOPark:

1. **App: Download the CellOPark Australia app**
2. **Website: www.cellopark.com.au/Site/register**
3. **Phone: 1300 CellOPark**

To use the App

- Select the zone number that you have parked in or scan the individual QR code which is on each space.
- Hit START to start your session and STOP to end your session.

Loading zones:

For a quick drop-off it MAY be possible to use a loading zone (as marked on the campus maps). However, we must emphasise that we cannot guarantee the safety of this option if loading zones are congested at drop-off and pick-up times.

CONTACT NUMBERS:

GERRIC OFFICE:
02 9385 1972

PROGRAM HOTLINE
0497 965 622